

Fleetwood
HOMES®

FLOOR PLANS

Broadmore Series

ALL PRICING INCLUDES HOME ONLY WITH STANDARD FACTORY FEATURES. NO OPTIONS/UPGRADES, DELIVERY, INSTALL, TAXES, ETC ARE INCLUDED IN PRICE.
ALL PRICES, STANDARD FEATURES, & OPTIONS LISTED FOR THE HOMES MAY BE SUBJECT TO CHANGE IN COST AND/OR AVAILABILITY.



BROADMORE SERIES

STANDARD LIVING FEATURES

EXTERIOR

LP Smart Panel exterior siding
4" trim all windows
Painted shutters FDS & Hitch End (multi section)
Painted shutters Hitch End only (single section)
6" Eave on all sides for multi section
No rear end wall eave on singlewides

INTERIOR / FINISH WALLS

Factory select Take Away carpet – 15 oz.
7/16" – 7# carpet pad
(Carpet & pad shipped loose on multi section)
Factory select vinyl flooring with baseboard in
wet areas per plan
White textured ceilings (orange peel)
Factory select vinyl/paper covered wall panels T/O
Wire closet shelves
White window & door trim
No entry lino

DOORS & WINDOWS

36" In-swing front door w/deadbolt
36" In-swing rear door w/deadbolt, per plan
Vinyl clad thermo-pane windows with Low "E"
2-panel white interior doors
Residential style mortise door hinges (3)
Stick-on door stops

KITCHEN

18 cu. ft. stainless steel Whirlpool frost free
refrigerator
30" stainless steel Whirlpool free standing electric
range, w/clock, window & timer
30" power range hood with light
7" double cell stainless steel sink
Dual handle chrome faucet
Bank of drawers
Laminate backsplash

MASTER BATH

60" 3 pc. ABS tub/shower per plan
Acrylic sink w/dual handle faucets
Elongated commode
Exhaust fan
Framed bathroom mirrors
36" height lavy cabinet
Towel bar & tissue holder
Laminate backsplash

GUEST BATH

60" 3 pc. ABS tub/shower
Acrylic sink w/dual handle faucets
Elongated commode
Exhaust fan
Framed bathroom mirrors
36" height lavy cabinet
Towel bar & tissue holder
Laminate backsplash

CABINETRY

Hardwood cabinet doors and face frame
Cabinet doors & drawers w/knobs
30" overhead kitchen cabinets
Crown molding on kitchen cabinets
No shelf above washer / dryer
Shelf & white bead board or cabinet-matched luan
above refrigerator
White bead board or cabinet-matched luan accent
above kitchen overheads
Overhead cabinets w/fixed shelf and finished sides
Unlined base & overhead cabinets w/MDF fixed shelf
Wood ply drawer sides w/metal drawer guides

ELECTRIC & PLUMBING

200 Amp all-electric service (gas optional)
Master water shut-off valve
Shut-off valve on toilets
30 gallon Energy Star rated electric water heater
Electric furnace
LED can lights T/O
Wire & brace for ceiling fan in living room
GFI patio plug near rear door
Porch lights at all exterior doors
32 watt whole house fan
Smart technology thermostat

STRUCTURAL

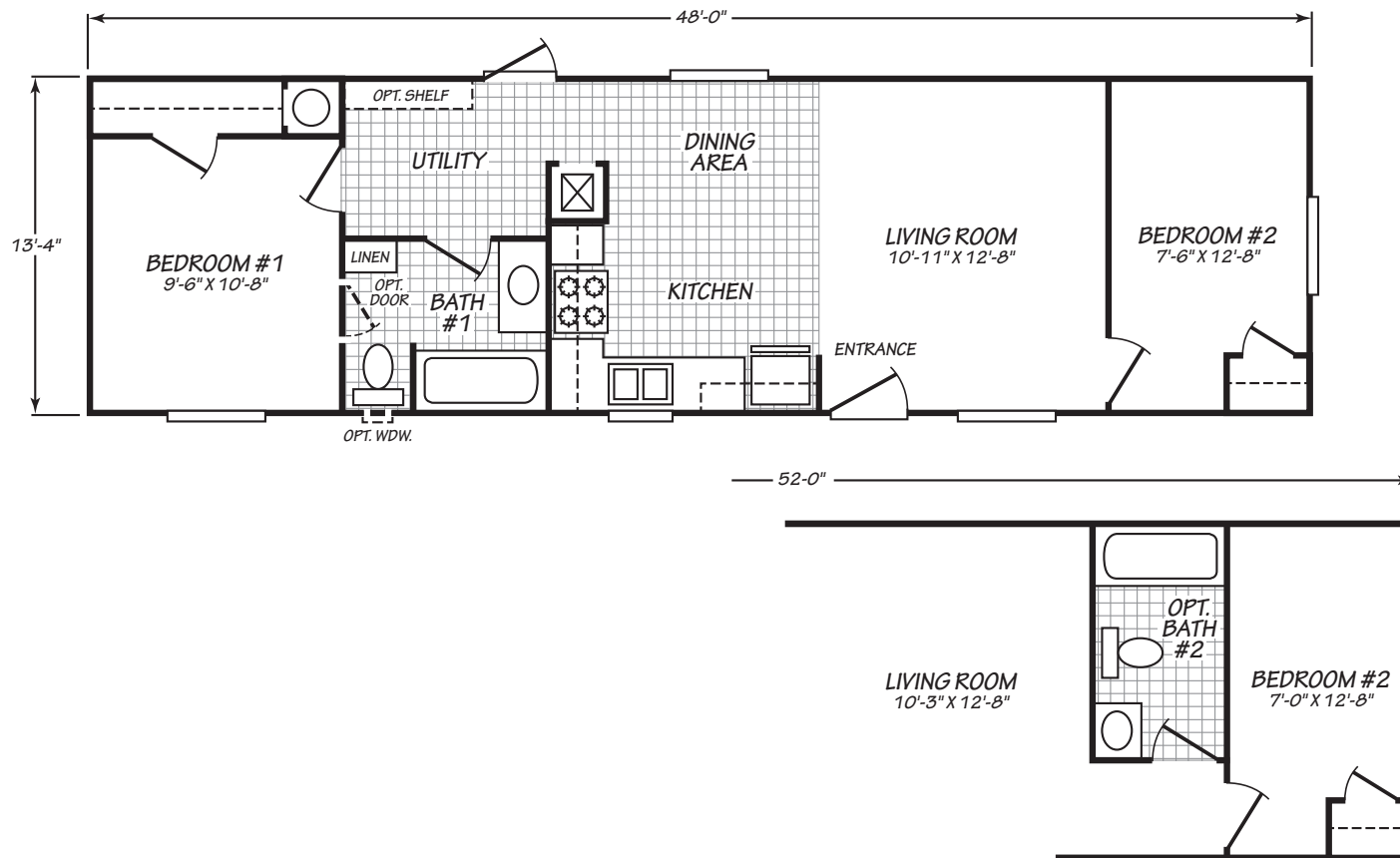
1 Year structural warranty
(see Homeowner's Guide for complete details)
30 lb. Roof load
8' flat ceilings
Energy Star 2.0 compliant and certified
2" x 6" exterior walls 16" o.c.
19/32" T&G OSB floor decking
3:12 Roof pitch
Class A fire rated limited lifetime architectural shingles
Removable hitches
Zone III Thermal Specifications:
R-40 roof, R-21 walls, R-33 floor

- o Den, Family Room (F/R), Activity Room (A/R), and Bonus Room (B/R) are all similar spaces and any standard feature for a series that mentions one also applies to all.

Specifications Subject to Change Without Notice or Obligation

12/18/2023

BROADMORE



MODEL 14482B

2 Bedroom • 1 Bath • 640 Square Feet

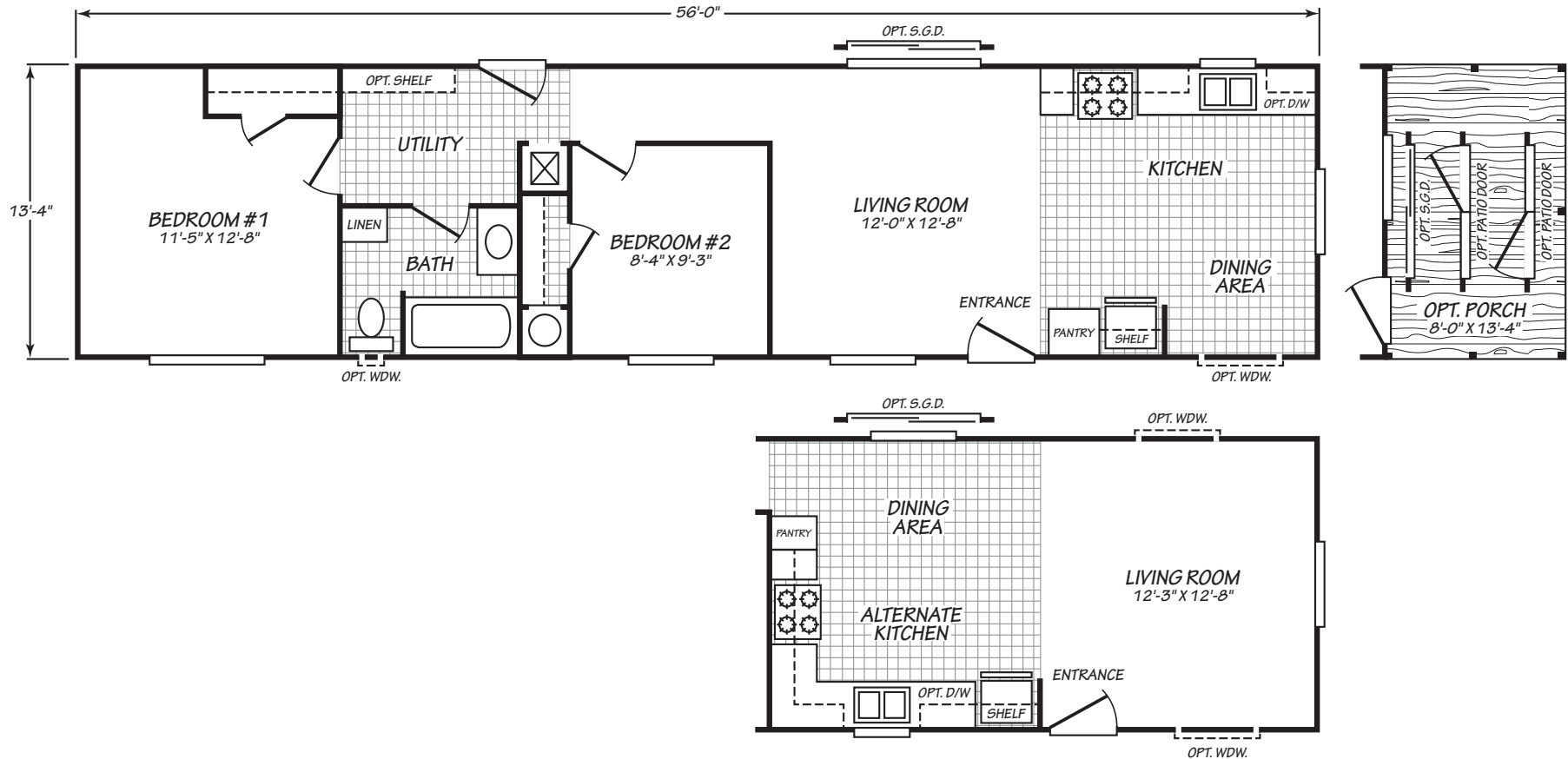
©2023 FLEETWOOD HOMES INC. ALL RIGHTS RESERVED

Important: Because we continually update and modify our products, it is important for you to know that our brochures and literature are for illustrative purposes only. **ILLUSTRATIONS MAY SHOW OPTIONAL FEATURES.** All information contained herein may vary from the actual home we build. Dimensions are nominal length and width measurements are from exterior wall to exterior wall. We reserve the right to make changes at any time, without notice or obligation, in prices, colors, materials, specifications, features and models. Please check with your retailer for specific information about the home you select.

BM/230/OCT22
PFS APPROVAL_10/13/22



BROADMORE



MODEL 14562B

2 Bedroom • 1 Bath • 746 Square Feet

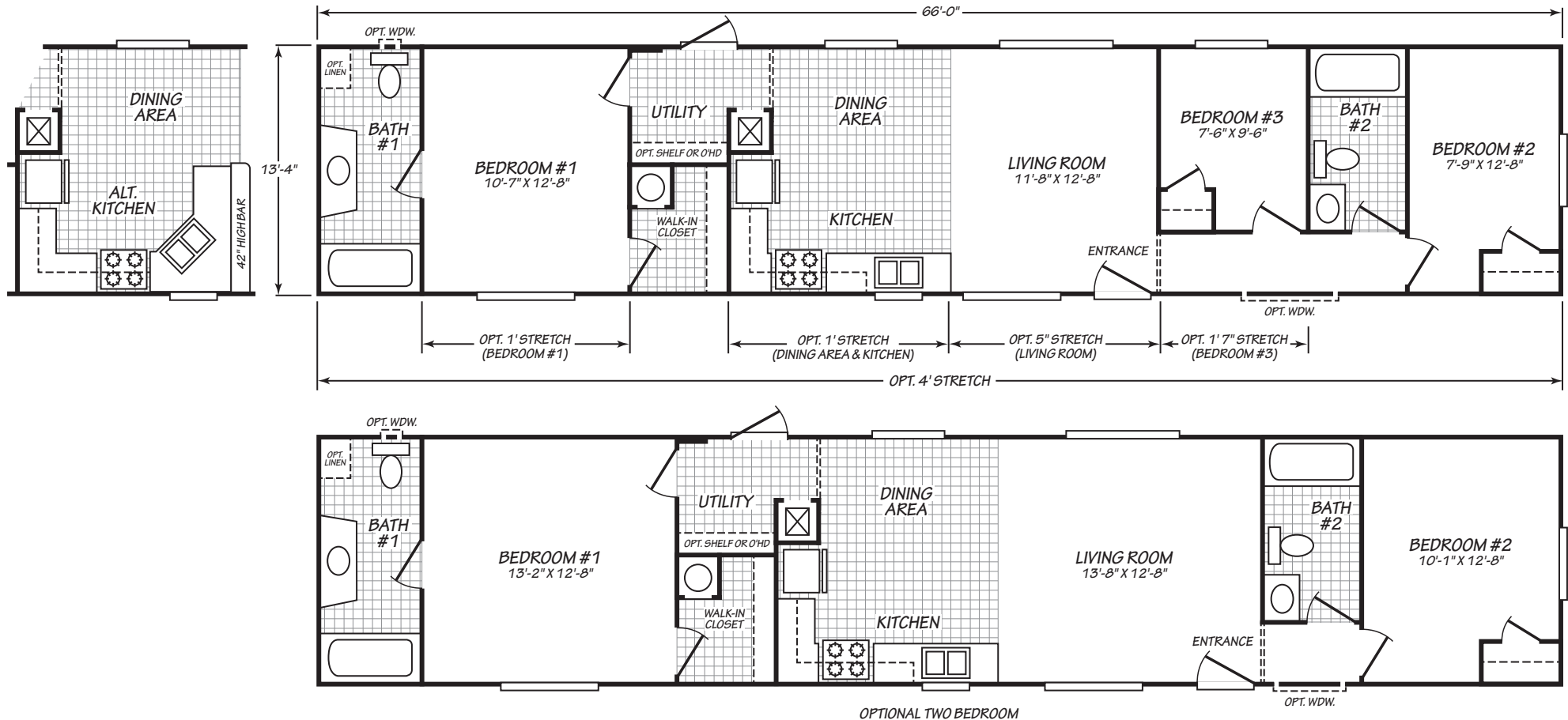
©2023 FLEETWOOD HOMES INC. ALL RIGHTS RESERVED

Important: Because we continually update and modify our products, it is important for you to know that our brochures and literature are for illustrative purposes only. **ILLUSTRATIONS MAY SHOW OPTIONAL FEATURES.** All information contained herein may vary from the actual home we build. Dimensions are nominal length and width measurements are from exterior wall to exterior wall. We reserve the right to make changes at any time, without notice or obligation, in prices, colors, materials, specifications, features and models. Please check with your retailer for specific information about the home you select.

BM/230/JUL22
PFS APPROVAL_6/29/22



BROADMORE



MODEL 14663B

3 Bedroom • 2 Bath • 880 Square Feet

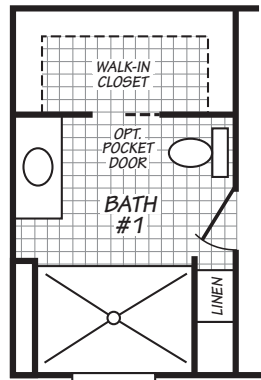
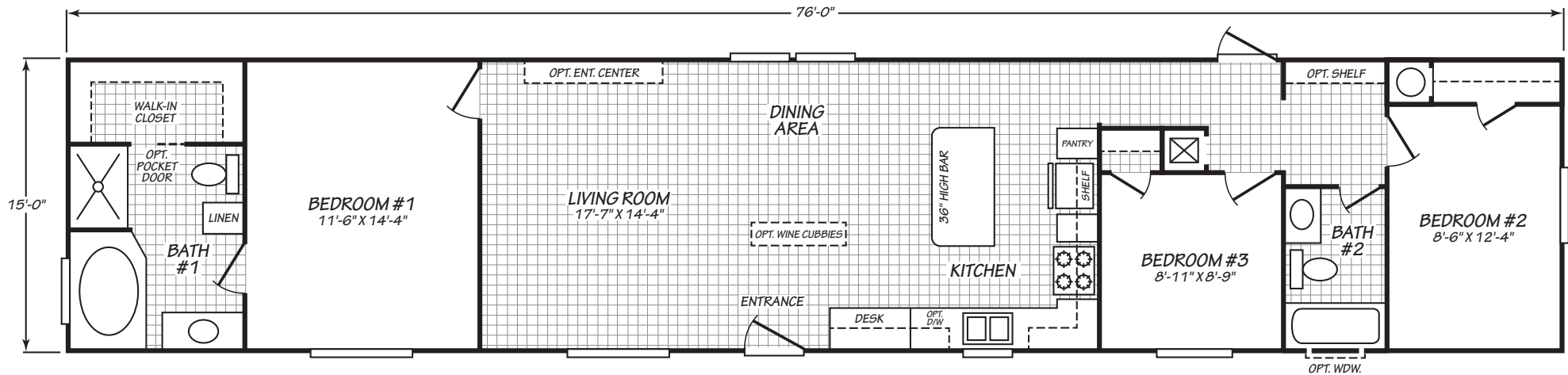
©2023 FLEETWOOD HOMES INC. ALL RIGHTS RESERVED

Important: Because we continually update and modify our products, it is important for you to know that our brochures and literature are for illustrative purposes only. **ILLUSTRATIONS MAY SHOW OPTIONAL FEATURES.** All information contained herein may vary from the actual home we build. Dimensions are nominal length and width measurements are from exterior wall to exterior wall. We reserve the right to make changes at any time, without notice or obligation, in prices, colors, materials, specifications, features and models. Please check with your retailer for specific information about the home you select.

BM/230/AUG22
PFS APPROVAL_8/12/22



BROADMORE



OPT. TILE SHOWER

MODEL 16763Y

3 Bedroom • 2 Bath • 1,140 Square Feet

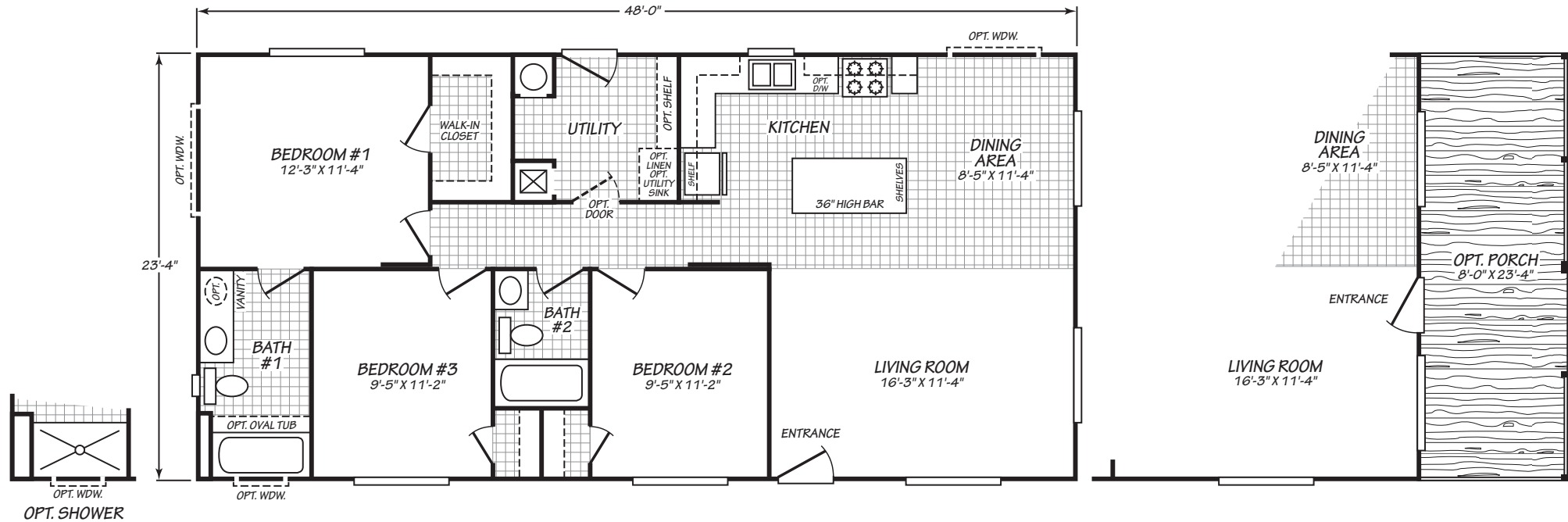
©2023 FLEETWOOD HOMES INC. ALL RIGHTS RESERVED

Important: Because we continually update and modify our products, it is important for you to know that our brochures and literature are for illustrative purposes only. **ILLUSTRATIONS MAY SHOW OPTIONAL FEATURES.** All information contained herein may vary from the actual home we build. Dimensions are nominal length and width measurements are from exterior wall to exterior wall. We reserve the right to make changes at any time, without notice or obligation, in prices, colors, materials, specifications, features and models. Please check with your retailer for specific information about the home you select.

BM/230/FEB23
PFS APPROVAL_2/02/23



BROADMORE



MODEL 24483M

3 Bedroom • 2 Bath • 1,120 Square Feet

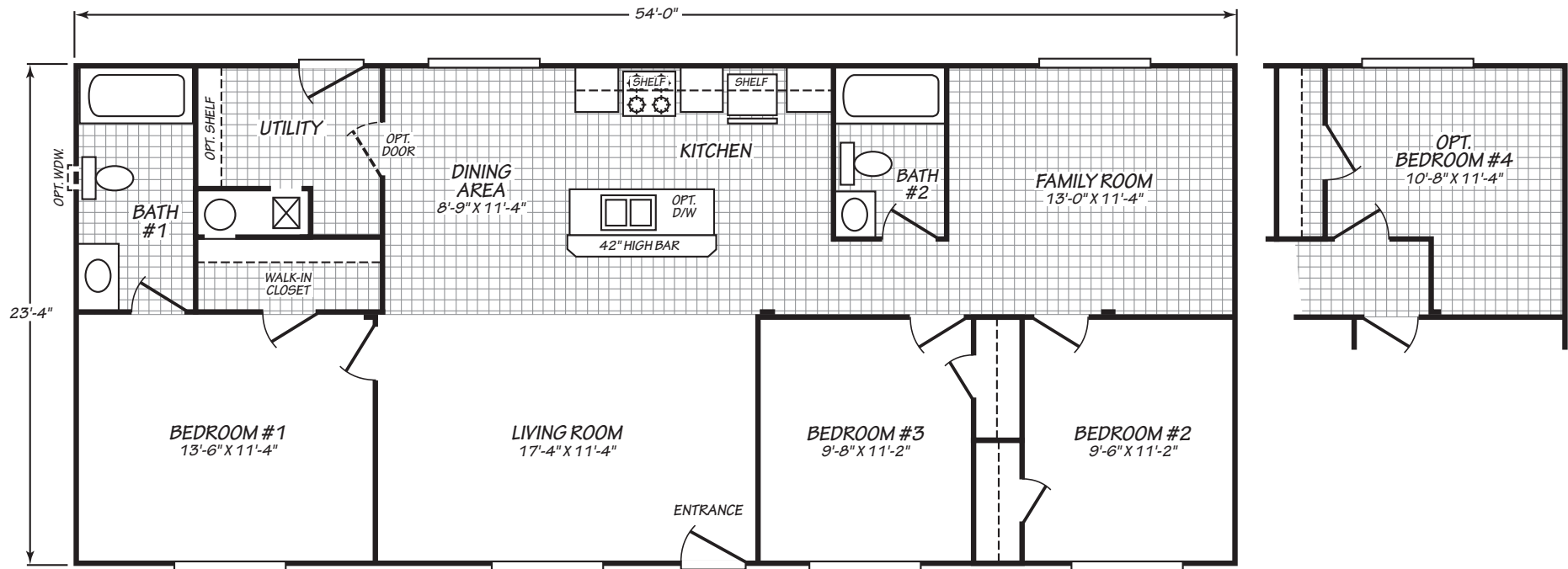
©2023 FLEETWOOD HOMES INC. ALL RIGHTS RESERVED

Important: Because we continually update and modify our products, it is important for you to know that our brochures and literature are for illustrative purposes only. **ILLUSTRATIONS MAY SHOW OPTIONAL FEATURES.** All information contained herein may vary from the actual home we build. Dimensions are nominal length and width measurements are from exterior wall to exterior wall. We reserve the right to make changes at any time, without notice or obligation, in prices, colors, materials, specifications, features and models. Please check with your retailer for specific information about the home you select.

BM/230/OCT22
PFS APPROVAL_10/04/22



BROADMORE



MODEL 24543B

3 Bedroom • 2 Bath • 1,260 Square Feet

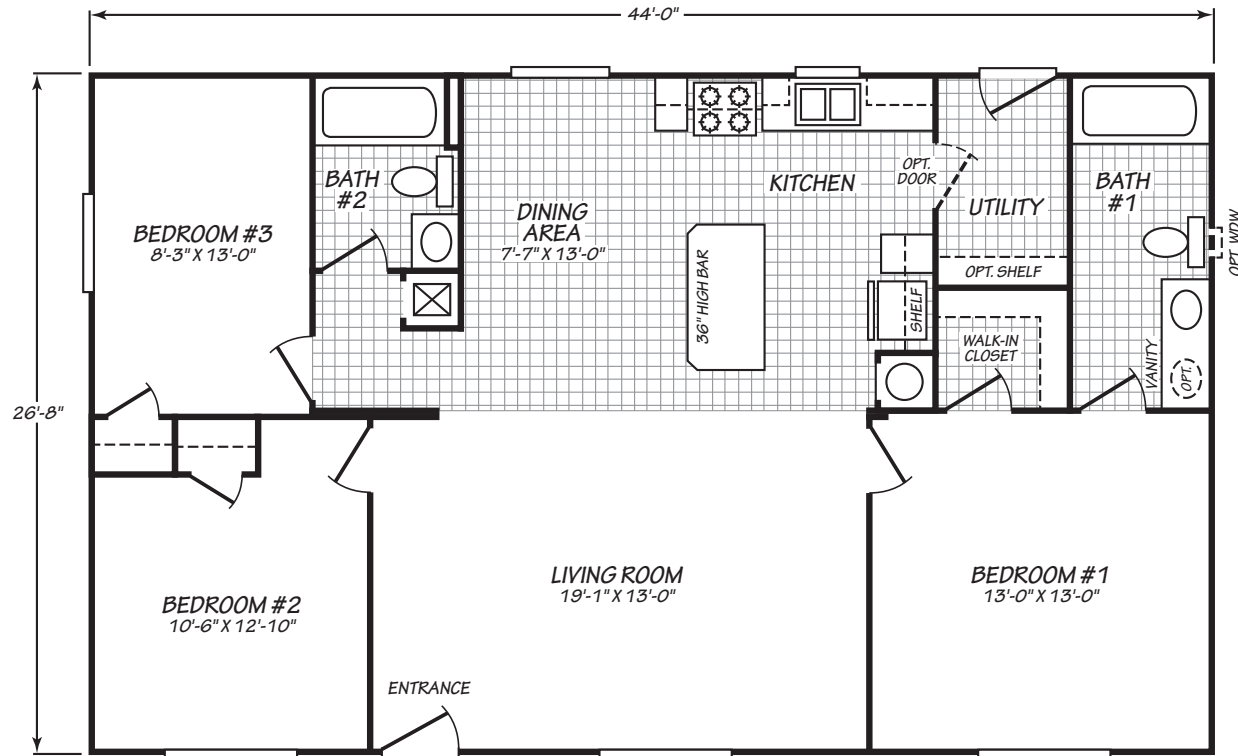
©2023 FLEETWOOD HOMES INC. ALL RIGHTS RESERVED

Important: Because we continually update and modify our products, it is important for you to know that our brochures and literature are for illustrative purposes only. **ILLUSTRATIONS MAY SHOW OPTIONAL FEATURES.** All information contained herein may vary from the actual home we build. Dimensions are nominal length and width measurements are from exterior wall to exterior wall. We reserve the right to make changes at any time, without notice or obligation, in prices, colors, materials, specifications, features and models. Please check with your retailer for specific information about the home you select.

BM/230/SEP23
PFS APPROVAL_9/06/23



BROADMORE



MODEL 28443B

3 Bedroom • 2 Bath • 1,173 Square Feet

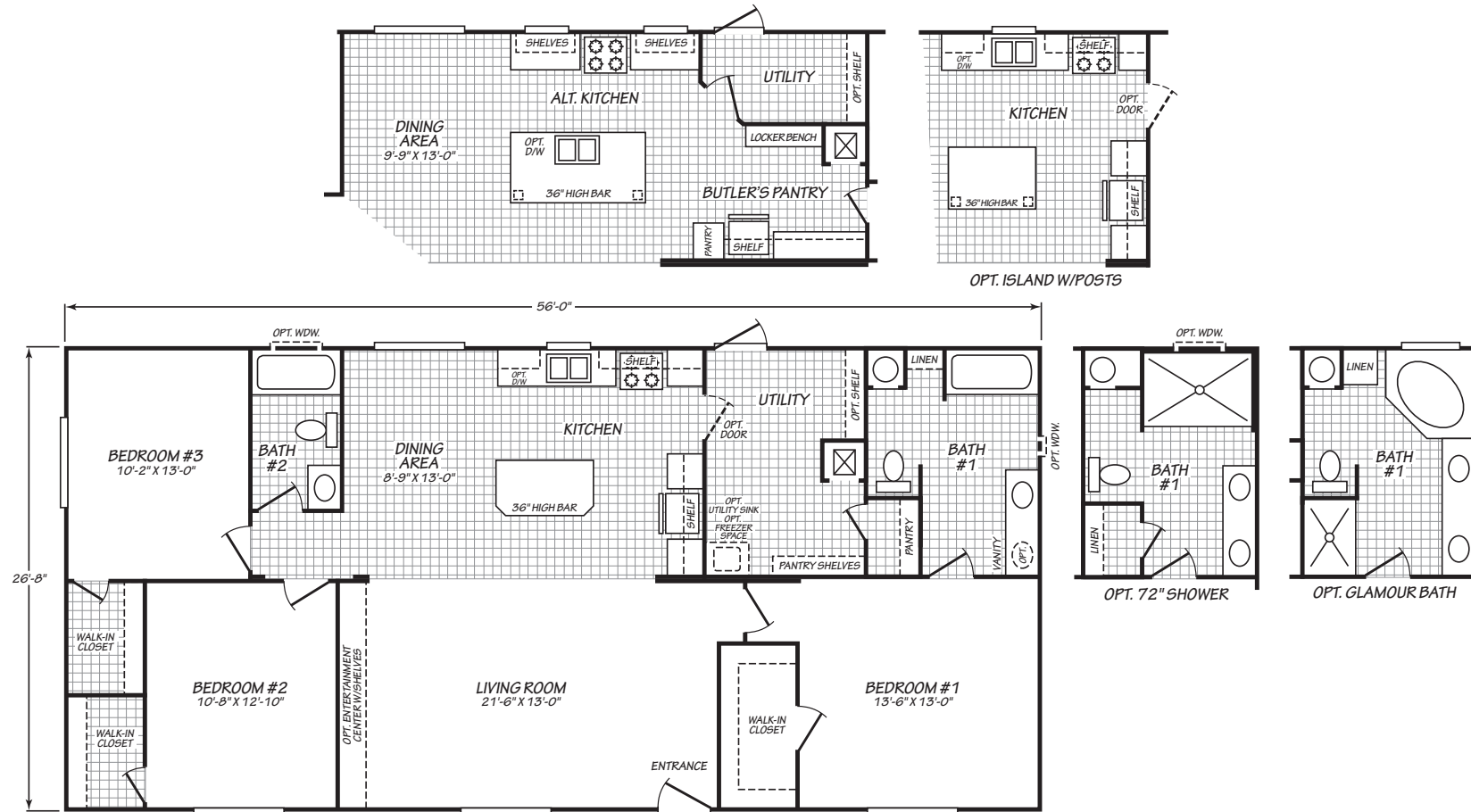
©2023 FLEETWOOD HOMES INC. ALL RIGHTS RESERVED

Important: Because we continually update and modify our products, it is important for you to know that our brochures and literature are for illustrative purposes only. **ILLUSTRATIONS MAY SHOW OPTIONAL FEATURES.** All information contained herein may vary from the actual home we build. Dimensions are nominal length and width measurements are from exterior wall to exterior wall. We reserve the right to make changes at any time, without notice or obligation, in prices, colors, materials, specifications, features and models. Please check with your retailer for specific information about the home you select.

BM/230/FEB23
PFS APPROVAL_2/14/23



BROADMORE



MODEL 28563B

3 Bedroom • 2 Bath • 1,493 Square Feet

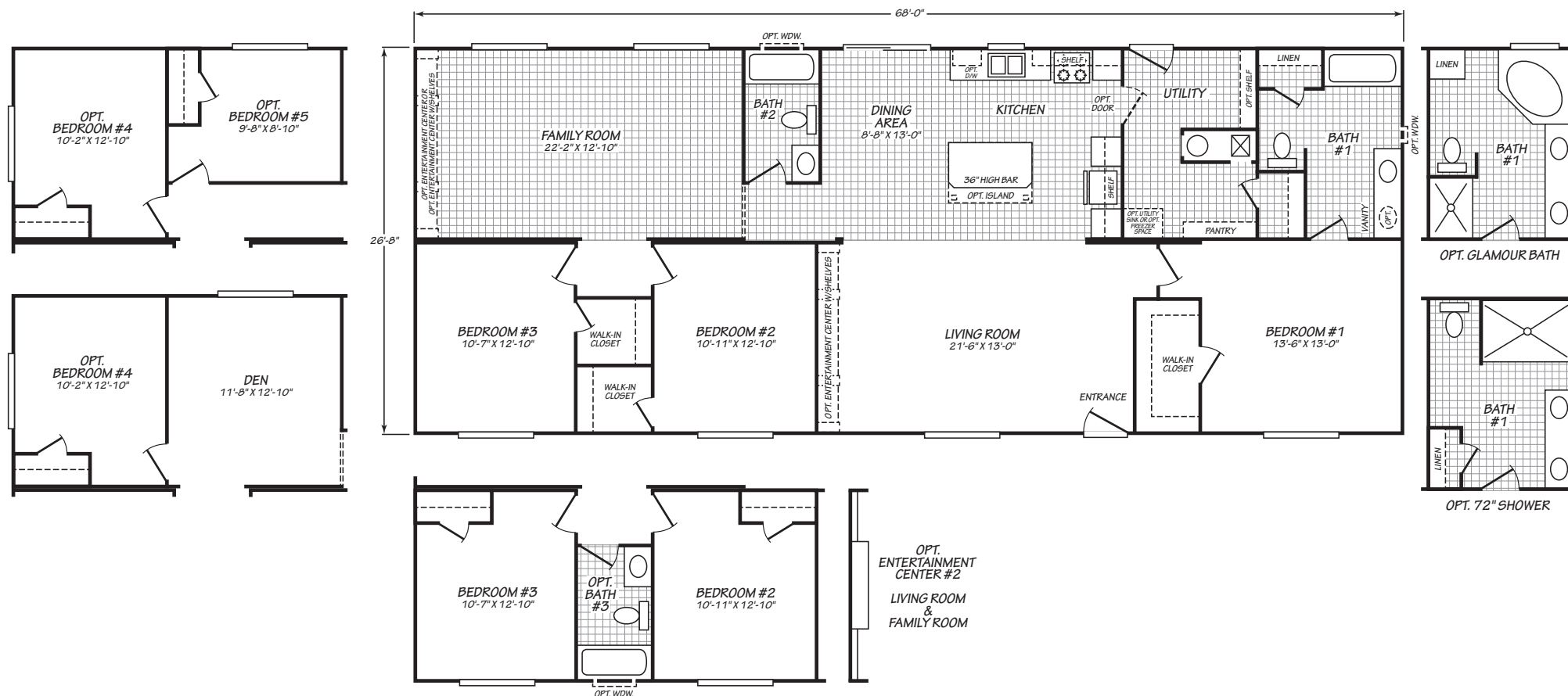
©2023 FLEETWOOD HOMES INC. ALL RIGHTS RESERVED

Important: Because we continually update and modify our products, it is important for you to know that our brochures and literature are for illustrative purposes only. **ILLUSTRATIONS MAY SHOW OPTIONAL FEATURES.** All information contained herein may vary from the actual home we build. Dimensions are nominal length and width measurements are from exterior wall to exterior wall. We reserve the right to make changes at any time, without notice or obligation, in prices, colors, materials, specifications, features and models. Please check with your retailer for specific information about the home you select.

BM/230/JUL22
PFS APPROVAL_7/12/22



BROADMORE



MODEL 28683B

3 Bedroom • 2 Bath • 1,813 Square Feet

©2023 FLEETWOOD HOMES INC. ALL RIGHTS RESERVED

Important: Because we continually update and modify our products, it is important for you to know that our brochures and literature are for illustrative purposes only. **ILLUSTRATIONS MAY SHOW OPTIONAL FEATURES.** All information contained herein may vary from the actual home we build. Dimensions are nominal length and width measurements are from exterior wall to exterior wall. We reserve the right to make changes at any time, without notice or obligation, in prices, colors, materials, specifications, features and models. Please check with your retailer for specific information about the home you select.

BM/230/FEB23
PFS APPROVAL_2/24/23



[illegible]

4 Bedroom • 2 Bath • 2,026 Square Feet

Important: Because we continually update and modify our products, it is important for you to know that our brochures and literature are for illustrative purposes only. **ILLUSTRATIONS MAY SHOW OPTIONAL FEATURES.** All information contained herein may vary from the actual home we build. Dimensions are nominal length and width measurements are from exterior wall to exterior wall. We reserve the right to make changes at any time, without notice or obligation, in prices, colors, materials, specifications, features and models. Please check with your retailer for specific information about the home you select.

BM/230/MAR23
PFS APPROVAL 3/20/23



Broadmore Option Form

Description	Price	Qty
PACKAGES		
Faucets - Single Lever T/O	\$230.00	
Package - Appliance - Essential Stainless	\$3,040.00	
Package - Appliance - Essential Gas and Stainless	\$3,110.00	
Package - Appliance - Essential Pro Stainless	\$3,300.00	
Package - Appliance - Essential Pro Gas and Stainless	\$3,370.00	
Package - Appliance - Elite Stainless	\$4,000.00	
Package - Appliance - Elite Gas and Stainless	\$4,070.00	
Package - Appliance - Elite Pro Stainless	\$4,270.00	
Package - Appliance - Elite Pro Gas & Stainless	\$4,340.00	
Package - Choice	\$520.00	
Package - Energy Star	\$2740 - \$4120	
Package - Power Saver	\$1,720.00	
Package - Prairie Dusk	\$1,250.00	
Package - WUI (per LF)	\$45.00	
STRUCTURAL		
Closet - Guest	\$640.00	
Ducts - In Floor Crossover	\$470.00	
Floor Plan - Flip End to End	\$1,430.00	
Floor Plan - Mirror Image	\$1,430.00	
Linen Closet - Wall & Door	\$590.00	
Perimeter Heating - (per register)	\$195.00	
Stretch - 16" (Doublewide)	\$1,420.00	
Supersize (Doublewide)	\$130.00	
THERMAL		
Insulation - Ceiling R38 ILO R28 (per LF) and Floor	\$5.00	
Insulation - Floor R33 ILO R22 (per LF) and Floor	\$6.00	
PLUMBING		
Water Shut Off Valves T/O	\$130.00	
ELECTRICAL		
Electric Service - 100 Amp	\$0.00	
Electric Service - 200 Amp	\$0.00	
AC Disconnect	\$195.00	
Ceiling Fan - Wire Only	\$130.00	
Ceiling Fan w/Light - Installed	\$260.00	
Heat Pump Ready	\$120.00	
Light - Can Each	\$130.00	
Light - Chandelier	\$180.00	
Light - Exterior Flood (each)	\$70.00	
Light - Exterior Coach (each)	\$125.00	
Light - Pendant w/Edison Bulb	\$130.00	
Light - Pendant - Vintage	\$300.00	
Recept - Exterior - GFI - Add	\$100.00	
Recept - Interior - Add	\$45.00	
Switch - Interior 3 Way	\$75.00	
Thermostat - Digital - AC Compatible	\$130.00	
Thermostat - Digital - Heat Pump Compatible	\$110.00	
TV & Phone Raceway	\$45.00	
USB Charging Recept	\$70.00	
FLOORS		
Carpet - Basic Mix	\$230 - \$330	
Carpet - Shake It Up	\$380 - \$1250	
Carpet - Omit	\$-185 - \$-970	
Carpet Pad - Omit	\$-60 - \$-230	
Floor Covering - Vinyl Entry	\$80.00	
Floor Covering - Vinyl ILO Carpet (per room)	\$170.00	
Ship Loose - Lino Bar (3 Pcs)	\$240.00	
CABINETRY		
Cab Doors - Stiles Hardwood Raised Panel - Mesquite	STD	
Cab Doors - Stiles Hardwood Shaker - Coffee Cherry	STD	
Cab Doors - Stiles Hardwood Shaker - White	STD	
Adjustable Shelves - Kitchen Overhead	\$130.00	
Base Cab - Additional Drawer Bank	\$240.00	
Base Cab - Drawer over Door - Per Drawer	\$55.00	
Base Cab Pull Out Trash Can	\$200.00	
Base Cab w/Utility Sink	\$695.00	
Bookcase - Built In (each)	\$200.00	
Cab Doors - Drawers - Soft Close T/O	\$1,050.00	
Cabs - Lined Base	\$510.00	
Cabs - Lined Overheads	\$290.00	
Countertop - Butcher Block on Island	\$260.00	
Countertop - Formica Upgrade - Bullnose Edge T/O	\$920.00	
Countertop - Formica Upgrade - Self Edge T/O	\$300.00	
Countertop - Standard Formica - Bullnose Edge T/O	\$610.00	
Drawer Guides - Full Access	\$430.00	
Entertainment Center - Barnwood	\$2,240.00	
Hardware - Cab Pulls Dr & Drw Upgrade Brushed Nickel	\$170.00	
Foundation Ready	\$920.00	

Description	Price	Qty
Locker w/Bench	\$695.00	
Molding - Crown - Kitchen Cabinets	\$140.00	
Overhead Cab - Over Refrigerator	\$260.00	
Overhead Cab - Utility	\$240.00	
Overhead Cab - 42" W/2 Adjustable Shelves	\$390.00	
Pantry/Linen - 3 Door	\$495.00	
Shelf - Utility 1	\$50.00	
Tile Backsplash - Mosaic 4" T/O	\$650.00	
Tile Backsplash T/O - 4"	\$410.00	
KITCHEN		
Dishwasher - Plumb & Wire Only w/ Opening	\$80.00	
Dishwasher - Stainless Steel	\$695.00	
Garbage Disposal	\$200.00	
Garbage Disposal - Wire & Switch Only	\$70.00	
Icemaker - Plumbed Only	\$60.00	
Icemaker - w/ Plumbing	\$230.00	
Microwave - Over Range - Stainless Steel	\$640.00	
Range - Electric - Smooth Top - Stainless Steel	\$750.00	
Range - Gas - Self Cleaning - Stainless Steel	\$760.00	
Range - Gas - Stainless Steel	\$260.00	
Range - Plumb for Gas & Wire for Electric	\$140.00	
Range Hood - Canopy Decorative	\$250.00	
Range Hood - Stainless & Glass	\$640.00	
Range Hood - Stainless & Glass w/Full Tile Backsplash T/O Kt	\$920.00	
Range Hood - SS & Glass w/Full Mosaic Tile Backsplash T/O Kt	\$1,670.00	
Range - Omit	-\$225.00	
Refrigerator - 28 CF SxS - Stnls Steel	\$1,320.00	
Refrigerator - 25 CF - French Door - Stainless Steel	\$2,540.00	
Refrigerator - Omit	-\$310.00	
Faucet - Pull-Out Faucet w/Sprayer	\$160.00	
Faucet - Single Lever - Gooseneck w/Pull Down Sprayer	\$260.00	
Laminate Backsplash - Behind Range	\$100.00	
Sink - Kitchen - Farmhouse w/Apron - Black Stainless	\$550.00	
Sink - Kitchen - Farmhouse - Stainless Steel	\$430.00	
Sink - 8" Deep Stainless Steel	\$70.00	
Tile Backsplash - Behind Range	\$210.00	
Tile Backsplash - Full Wall - Kitchen	\$630.00	
Tile Backsplash - Full Wall - Mosaic - Kitchen	\$1,295.00	
UTILITY ROOM		
Air Conditioner - Partial Install 2 Ton	\$3,340.00	
Air Conditioner - Partial Install 2-1/2 Ton	\$3,570.00	
Air Conditioner - Partial Install 3 Ton	\$3,800.00	
Air Conditioner - Partial Install 3-1/2 Ton	\$4,030.00	
Air Conditioner - Partial Install 4 Ton	\$4,260.00	
Drain Line - Water Heater Installed	\$90.00	
Dryer - Gas - Plumb Only	\$130.00	
Floor Register - Toe Kick (Ea)	\$155.00	
Furnace Door - Metal	\$325.00	
Furnace Door - Wood	\$360.00	
Furnace - Electric	STD	
Furnace - Gas	\$640.00	
Furnace - High Efficiency Gas	\$1,720.00	
Recept - Freezer Recept	\$90.00	
Washer & Dryer - Front Load Electric	\$2,060.00	
Wtr Htr - 40 Gallon Electric	\$130.00	
Wtr Htr - 50 Gallon Electric	\$240.00	
Wtr Htr - 40 Gallon Gas	\$1,100.00	
Wtr Htr - 50 Gallon Gas	\$1,245.00	
INTERIOR		
Ceiling - Beams - Barnwood (ea)	\$330.00	
Fireplace - Electric 60" Linear	\$2,650.00	
Fireplace - Gas - Gray Stacked Stone	\$4,570.00	
Interior - Accent - Barnwood (per SF)	\$16.00	
Mirror - Wardrobe w/Barnwood Trim	\$260.00	
Mirror w/Barnwood Trim	\$200.00	
Molding - Baseboard - 2 1/4" (per LF) - (per floor)	\$7.00	
Molding - Baseboard - 5 1/4" (per LF) - (per floor)	\$17.00	
Molding - Ceiling Crown Upgrade - (per SF)	\$2.50	
Shelf - Floating - up to 48"	\$170.00	
Shelves - Wood w/Pole - White	\$240.00	
T&T - T/O (Per Sq. FT)	\$2.75	
Ship Loose - 3" Interior Trim Board - Center	STD	
Valance - Wood (per Window)	\$80.00	
Window Sills - Upgrade	\$220.00	
EXTERIOR		
Axle - Brake Entire Floor - PER FLOOR	\$300.00	
Chassis - Modified - per LF	\$20.00	

Broadmore Option Form

Description	Price	Qty
Roof Load - 40 lb w/3:12 Roof Pitch - 14' Wide (per LF)	\$4.00	
Roof Load - 60 lb w/3:12 Roof Pitch - 14' Wide (per LF)	\$25.00	
Roof Load - 80 lb w/3:12 Roof Pitch - 14' Wide (per LF)	\$30.00	
Roof Load - 100 lb w/3:12 Roof Pitch - 14' Wide (per LF)	\$60.00	
Roof Load - 120 lb w/3:12 Roof Pitch - 14' Wide (per LF)	\$60.00	
Roof Load - 40 lb w/3:12 Roof Pitch - 16' Wide (per LF)	\$5.00	
Roof Load - 60 lb w/3:12 Roof Pitch - 16' Wide (per LF)	\$26.00	
Roof Load - 80 lb w/3:12 Roof Pitch - 16' Wide (per LF)	\$45.00	
Roof Load - 100 lb w/3:12 Roof Pitch - 16' Wide (per LF)	\$65.00	
Roof Load - 120 lb w/3:12 Roof Pitch - 16' Wide (per LF)	\$65.00	
Roof Load - 40 lb w/3:12 Roof Pitch - 24' Wide (per LF)	\$8.00	
Roof Load - 60 lb w/3:12 Roof Pitch - 24' Wide (per LF)	\$30.00	
Roof Load - 80 lb w/3:12 Roof Pitch - 24' Wide (per LF)	\$70.00	
Roof Load - 100 lb w/3:12 Roof Pitch - 24' Wide (per LF)	\$95.00	
Roof Load - 120 lb w/3:12 Roof Pitch - 24' Wide (per LF)	\$100.00	
Roof Load - 40 lb w/3:12 Roof Pitch - 28' Wide (per LF)	\$10.00	
Roof Load - 60 lb w/3:12 Roof Pitch - 28' Wide (per LF)	\$60.00	
Roof Load - 80 lb w/3:12 Roof Pitch - 28' Wide (per LF)	\$90.00	
Roof Load - 100 lb w/3:12 Roof Pitch - 28' Wide (per LF)	\$120.00	
Roof Load - 120 lb w/3:12 Roof Pitch - 28' Wide (per LF)	\$130.00	
Eaves - 16" - (per perimeter ft)	\$7.00	
Dormer - 10'	\$1,010.00	
Dormer - 18'	\$1,290.00	
Dormer - Set Back	\$1,460.00	
Awning - Metal - Ship Loose	\$490.00	
Barrier - Air Infiltration	\$380.00	
Doorbell	\$100.00	
Exterior - Craftsman	\$1,995.00	
Exterior - Plastic Wrap Front & Rear	\$260.00	
Exterior Trim - 5/4 -Window/Door (Ea)	\$50.00	
Exterior Bottom Trim	\$335.00	
Ship Loose - Exterior Bottom Trim	\$295.00	
Hose Bibb	\$90.00	
Porch - 8' Covered Porch (Singlewide)	\$6,930.00	
Porch - Full (Doublewide)	\$11,860.00	
Roof - Ice & Snow Shield	\$600.00	
Roof - Metal (per Linear Ft)	\$70.00	
Roof - Metal Addt'l W/Dormer - 10'	\$1,060.00	
Roof - Metal Addt'l W/Dormer - 18'	\$1,360.00	
Shutter - Exterior - Craftsman (per window)	\$100.00	
Shutter - Exterior - "Z" Style (per window)	\$110.00	
Sidewalls - 2" x 6" w/R21 (per Perimeter FT)	\$6.00	
Siding - Lap (per Perimeter Ft)	\$35.00	
Siding - Premium Lap - Cascade Slate (per Perimeter Ft)	\$60.00	
Siding - Premium Lap - Summer Wheat (per Perimeter Ft)	\$60.00	
DOORS & WINDOWS		
Door - Exterior - Add	\$795.00	
Door - Exterior - Inswing Rear w/9 Light & Deadbolt - 36"	\$145.00	
Door - Exterior - Inswing w/1/2 Decor Glass Frnt	\$860.00	
Door - Exterior - Patio 72" w/ Screen	\$1,980.00	
Door - Exterior - Patio 72" ILO 1 Window	\$1,360.00	
Door - Exterior - Relocate	\$150.00	
Door - Exterior - Storm	\$380.00	
Door - Interior - Add	\$300.00	
Door - Interior - Barn Sliding	\$920.00	
Door - Interior - Kitchen to Utility	\$330.00	
Door - Interior - Pocket	\$320.00	
Door - Sliding Glass	\$1,140.00	
Door - Sliding Glass - Vinyl ILO 1 Window	\$890.00	
Door Handles - Interior - Lever	\$13.00	
Fire Door - Additonal	\$945.00	
Fire Door - Replaces Standard	\$695.00	
Window - 14 x 42 Bath Vinyl	\$250.00	
Window - 30 x 15	\$170.00	
Window - 30 x 40 - Add	\$240.00	
Window - 30 x 59 Vinyl - Add	\$350.00	
Window - 36 x 8 Vinyl	\$170.00	
Window - 72" Transom	\$370.00	
Window - 90 x 58 Vinyl - Additional	\$710.00	
Window - 90 x 58 Vinyl - ILO Standard	\$510.00	
Window - Relocate	\$170.00	
Window - Vinyl - Additional	\$470.00	
BATHS		
Bath - Glamour	\$2,510.00	
Lavy - China Bath Lavy	\$70.00	

Description	Price	Qty
Lavy - Double Bowl in Master Bath	\$280.00	
Lavy - Rectangular - China	\$130.00	
Medicine Cabinet - Mirrored - Master bath	\$130.00	
Overhead Cab - Bath	\$320.00	
Medicine Cabinet - Mirrored - Guest Bath	\$130.00	
Shower - 60" Groutless Resin Tile - per bath	\$2,995.00	
Shower - 72" Groutless Resin Tile - Master Bath	\$3,300.00	
Shower - 72" Tile w/ Sliding Glass Door - Master Bath	\$5,130.00	
Shower Stall - Fiberglass 60" - Per Bath	\$690.00	
Tile Backsplash - Per Bath	\$80 - \$100	
Tile Backsplash - Mosaic 4" - Per Bath	\$150.00	
Toilet - Raised Height - Per Bath	\$220.00	
Tub/Shower One Piece 60" - Per Bath	\$460.00	
Tub/Shower One Piece Oval 60" - Per Bath	\$620.00	
MISCELLANEOUS		
Detector - Carbon Monoxide & Smoke	\$90.00	
Detector - Carbon Monoxide & Smoke (HUD Compliant)	\$250.00	
MODEL SPECIFIC OPTIONS		
14482B		
Shrink - 4' - 1 Bedroom Version	-\$1,200.00	
Stretch - 4' w/two Baths	\$4,495.00	
Kitchen - Alternate Kitchen #1	\$1,120.00	
14562B		
Stretch - 4' w/two Baths	\$4,495.00	
Kitchen - Alternate	\$750.00	
14663B		
Package - Signature	\$670.00	
Two Bedroom	\$140.00	
Kitchen - Alternate	\$750.00	
24483M		
Shrink - 4' - Two Bedroom Version	-\$2,500.00	
24543B		
4th Bedroom	\$1,090.00	
28563B		
Rocky Mountain	\$4,995.00	
Alt. Kitchen w/Butler's Pantry	\$795.00	
28683B		
Bath - Third Optional	\$2,580.00	
Bedroom - Fourth	\$1,090.00	
Bedroom - Fourth & Fifth	\$2,040.00	
Rocky Mountain	\$4,620.00	
28764T		
Bath - Third Optional	\$2,580.00	
Peak PKG	\$10,580.00	
Bedroom - Fifth	\$1,320.00	
Bedroom - Fifth w/3rd Bath	\$3,100.00	
Alternate Utility	\$495.00	
Island - Alternate	\$570.00	
Glamour Bath #2 w/Stand Alone Tub	\$3,440.00	
Door - Interior - Houdini Door ILO Pantry Door	\$480.00	