

Fleetwood
HOMES®

FLOOR PLANS

Pure Series

ALL PRICING INCLUDES HOME ONLY WITH STANDARD FACTORY FEATURES. NO OPTIONS/UPGRADES, DELIVERY, INSTALL, TAXES, ETC ARE INCLUDED IN PRICE.
ALL PRICES, STANDARD FEATURES, & OPTIONS LISTED FOR THE HOMES MAY BE SUBJECT TO CHANGE IN COST AND/OR AVAILABILITY.



PURE HOMES STANDARD LIVING FEATURES

EXTERIOR

LP Smart Panel exterior siding
4" trim all windows
"Zero" eaves all sides multi-section
"Zero" end wall eaves on singlewides

INTERIOR / FINISH WALLS

Factory select 10 oz. carpet
7/16" – 7# Carpet pad
(Carpet & pad shipped loose on multi-section)
Factory select vinyl flooring with baseboard in
wet areas per plan
White textured ceilings (orange peel)
Factory select vinyl/paper covered wall panels T/O
Wire closet shelves
White window & door trim
No entry lino, per plan

DOORS & WINDOWS

36" In-swing front door w/deadbolt
36" In-swing rear door w/deadbolt, per plan
Vinyl clad thermo-pane windows with Low "E"
2-Panel white interior doors
Residential style mortise door hinges (3)
Stick-on door stops
Horizontal slide windows

KITCHEN

18 cu. ft. Whirlpool frost free refrigerator
30" Whirlpool free standing electric range
w/clock, window & timer
30" power range hood with light
7" double cell stainless steel sink
Dual handle chrome faucet
Bank of drawers
Laminate backsplash

MASTER BATH

60" 3 pc. ABS tub/shower per plan
Acrylic sink w/dual handle faucets
Elongated commode
Exhaust fan
Un-framed bathroom mirrors
36" height lavy cabinet
Laminate backsplash

GUEST BATH

60" 3 pc. ABS tub/shower
Acrylic sink w/dual handle faucets
Elongated commode
Exhaust fan
Un-framed bathroom mirrors
36" height lavy cabinet
Laminate backsplash

CABINETRY

MDF cabinet doors and face frame
Cabinet doors & drawers with knobs
30" overhead kitchen cabinets
No shelf above washer/dryer
Unlined overhead cabinets w/single fixed shelf
Unlined base cabinets w/no center shelf
Metal side mount drawer guides
Wood ply drawer sides

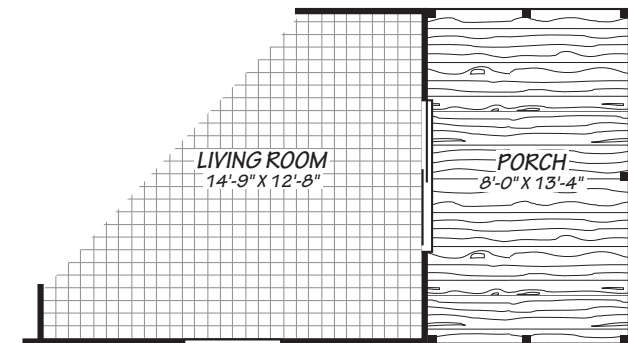
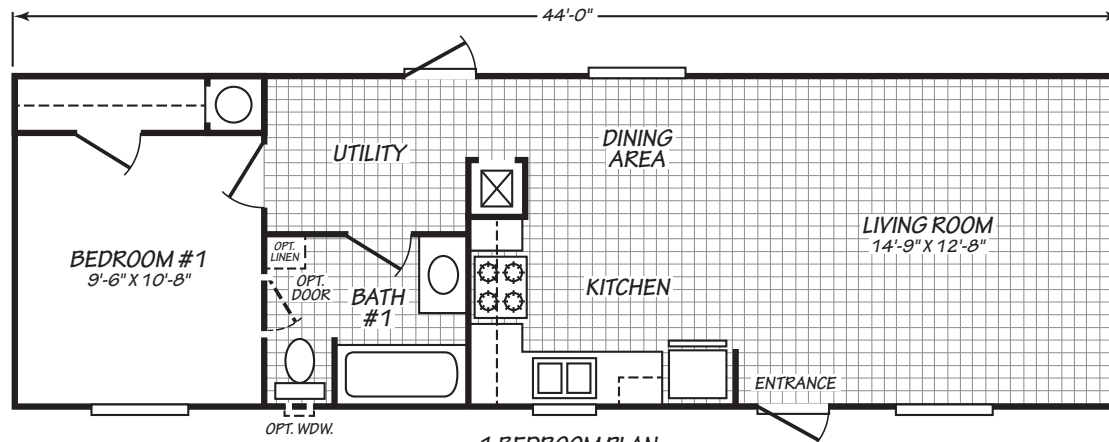
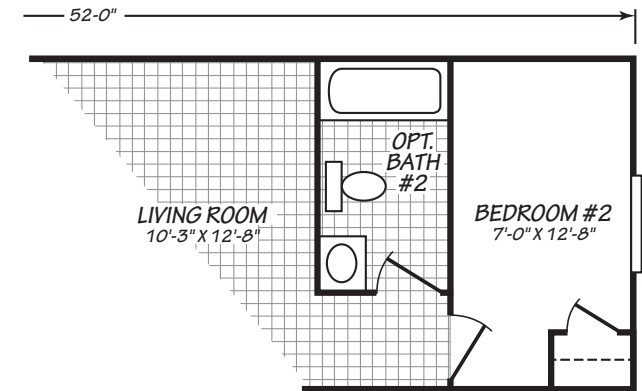
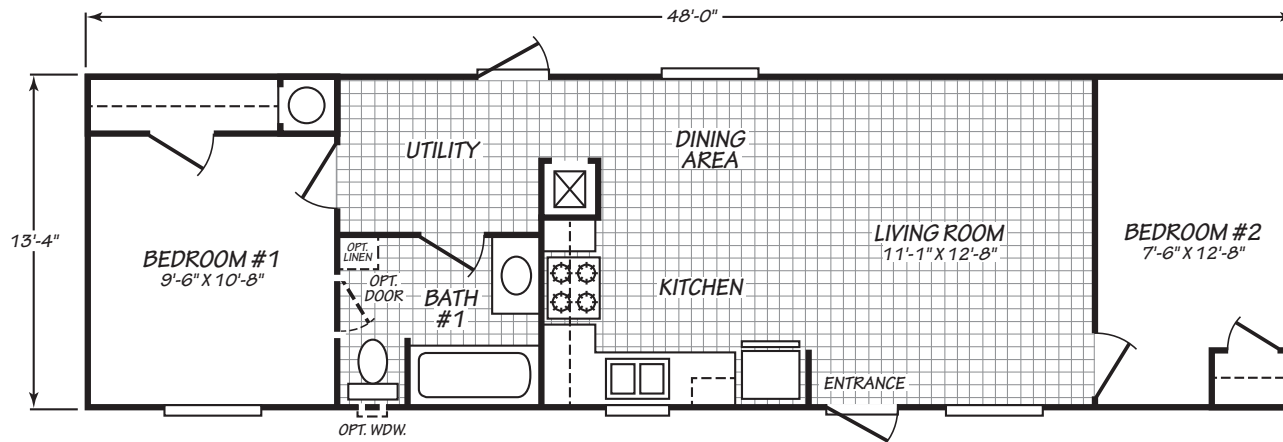
ELECTRIC & PLUMBING

200 Amp all electric service (gas optional)
Master water shut-off valve
Shut-off valve on toilets
30 gallon Energy Star rated electric water heater
Electric furnace
LED can lights T/O
GFI patio plug near rear door
Porch lights at all exterior doors
32 watt whole house fan
Smart technology thermostat

STRUCTURAL

1 Year structural warranty
(see Homeowner's Guide for complete details)
3:12 Roof pitch
30 lb. Roof load
8' flat ceilings
Energy Star 2.0 compliant and certified
2" x 6" Exterior walls 16" O.C.
19/32" T&G OSB floor decking
16" O.C. floor joists
Class A fire rated limited lifetime architectural
shingles
Removable hitch
Zone III Thermal Specifications:
R-40 roof, R-21 walls, R-33 floor

Specifications Subject to Change Without Notice or Obligation



MODEL 14482P

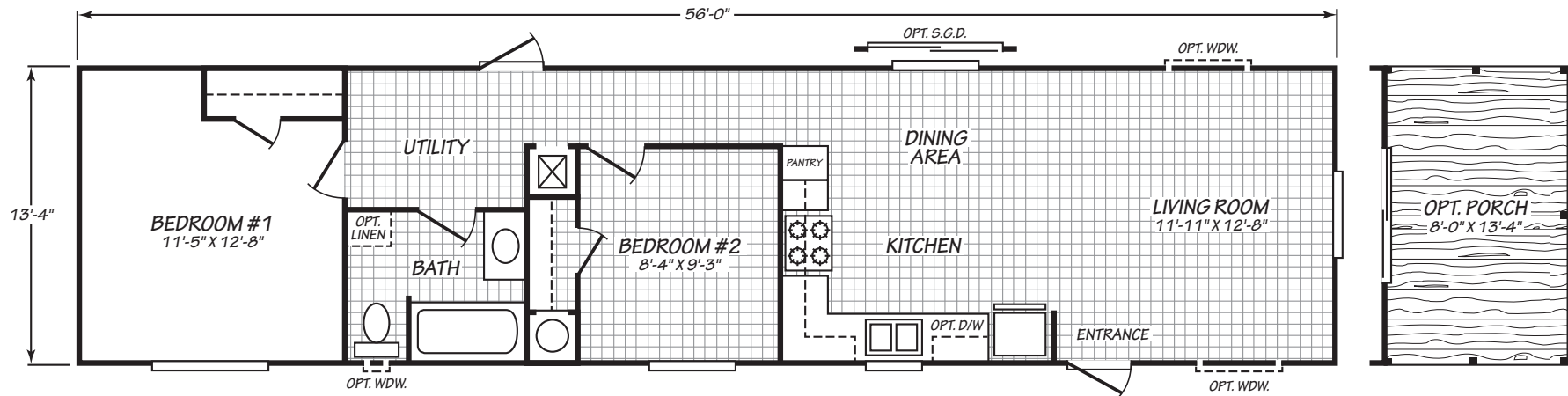
2 Bedroom • 1 Bath • 640 Square Feet

©2024 FLEETWOOD HOMES INC. ALL RIGHTS RESERVED

Important: Because we continually update and modify our products, it is important for you to know that our brochures and literature are for illustrative purposes only. **ILLUSTRATIONS MAY SHOW OPTIONAL FEATURES.** All information contained herein may vary from the actual home we build. Dimensions are nominal length and width measurements are from exterior wall to exterior wall. We reserve the right to make changes at any time, without notice or obligation, in prices, colors, materials, specifications, features and models. Please check with your retailer for specific information about the home you select.

PU/230/JUN23
PFS APPROVAL_6/05/23





MODEL 14562P

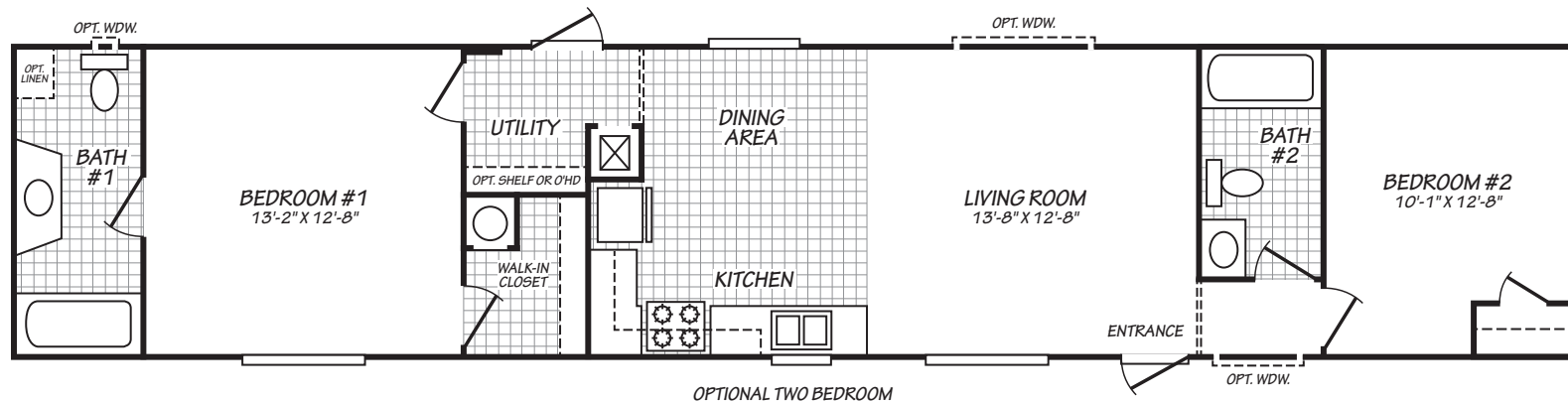
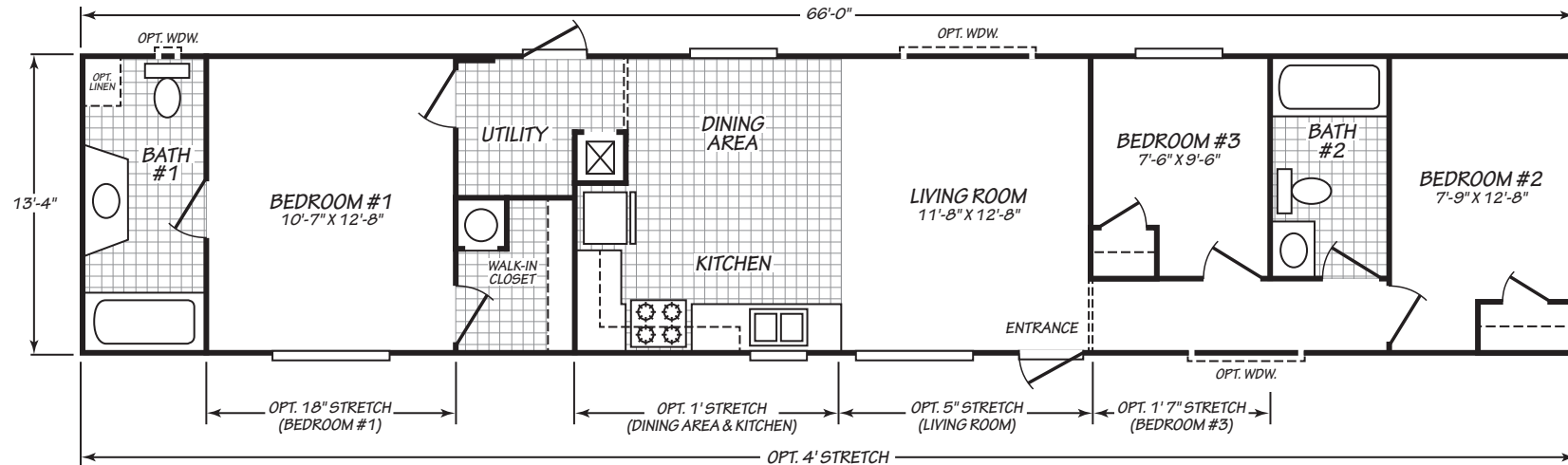
2 Bedroom • 1 Bath • 746 Square Feet

©2024 FLEETWOOD HOMES INC. ALL RIGHTS RESERVED

Important: Because we continually update and modify our products, it is important for you to know that our brochures and literature are for illustrative purposes only. **ILLUSTRATIONS MAY SHOW OPTIONAL FEATURES.** All information contained herein may vary from the actual home we build. Dimensions are nominal length and width measurements are from exterior wall to exterior wall. We reserve the right to make changes at any time, without notice or obligation, in prices, colors, materials, specifications, features and models. Please check with your retailer for specific information about the home you select.

PU/230/JUN23
PFS APPROVAL_6/02/23





MODEL 14663P

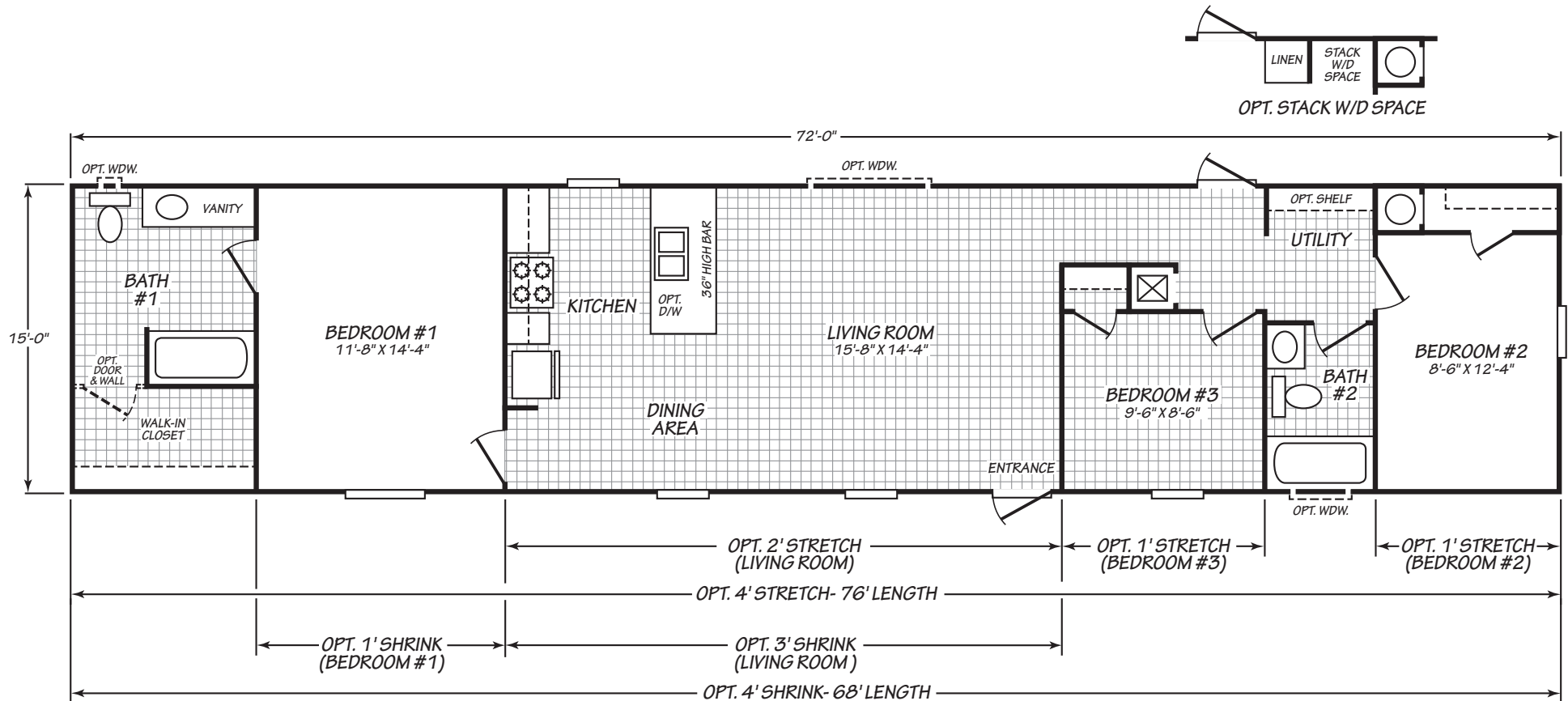
3 Bedroom • 2 Bath • 880 Square Feet

©2024 FLEETWOOD HOMES INC. ALL RIGHTS RESERVED

Important: Because we continually update and modify our products, it is important for you to know that our brochures and literature are for illustrative purposes only. **ILLUSTRATIONS MAY SHOW OPTIONAL FEATURES.** All information contained herein may vary from the actual home we build. Dimensions are nominal length and width measurements are from exterior wall to exterior wall. We reserve the right to make changes at any time, without notice or obligation, in prices, colors, materials, specifications, features and models. Please check with your retailer for specific information about the home you select.

PU/230/JUN23
PFS APPROVAL_6/05/23





MODEL 16723P

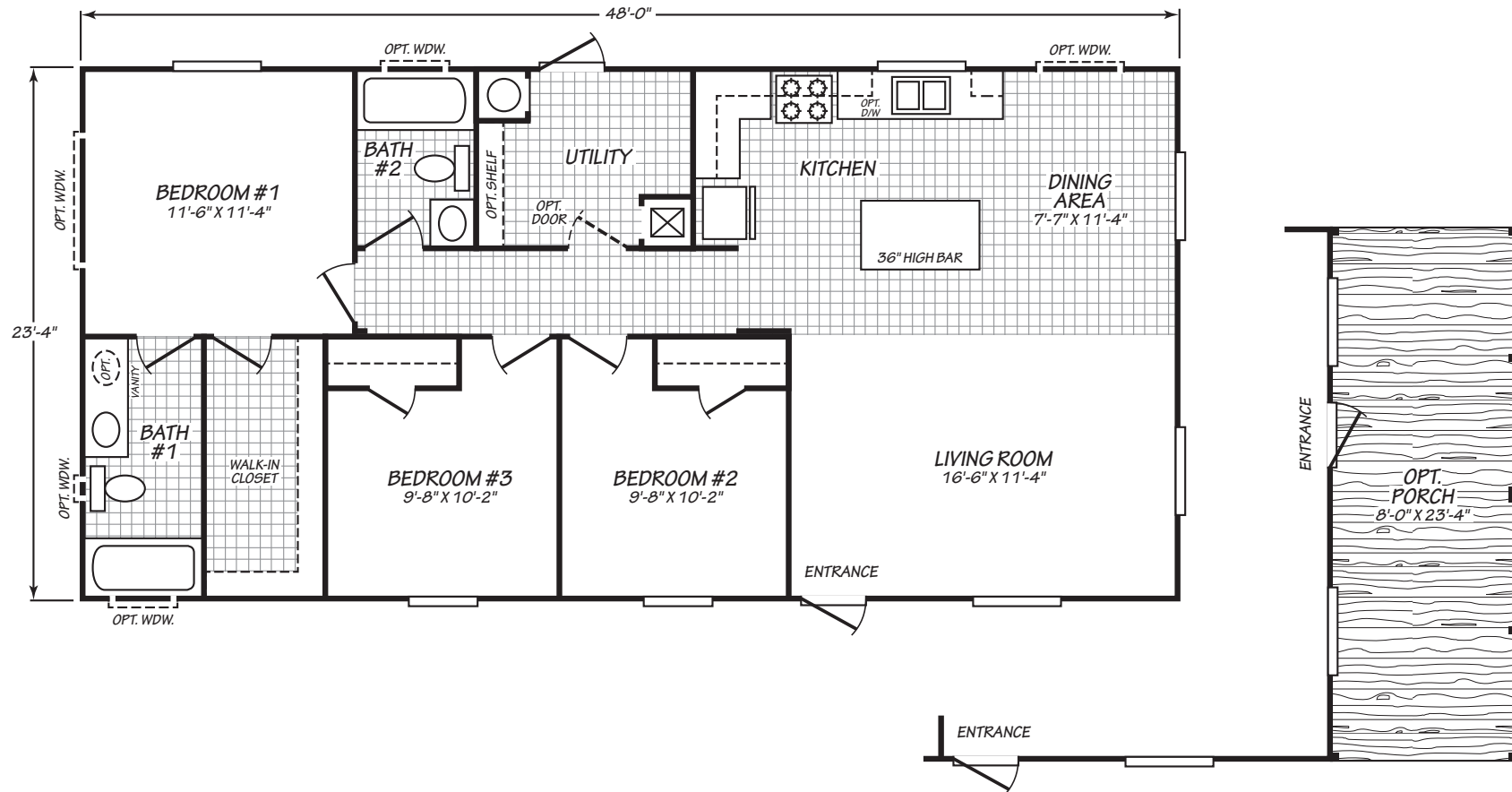
3 Bedroom • 2 Bath • 1,080 Square Feet

©2024 FLEETWOOD HOMES INC. ALL RIGHTS RESERVED

Important: Because we continually update and modify our products, it is important for you to know that our brochures and literature are for illustrative purposes only. **ILLUSTRATIONS MAY SHOW OPTIONAL FEATURES.** All information contained herein may vary from the actual home we build. Dimensions are nominal length and width measurements are from exterior wall to exterior wall. We reserve the right to make changes at any time, without notice or obligation, in prices, colors, materials, specifications, features and models. Please check with your retailer for specific information about the home you select.

PU/230/APR23
PFS APPROVAL_4/19/23





MODEL 24483P

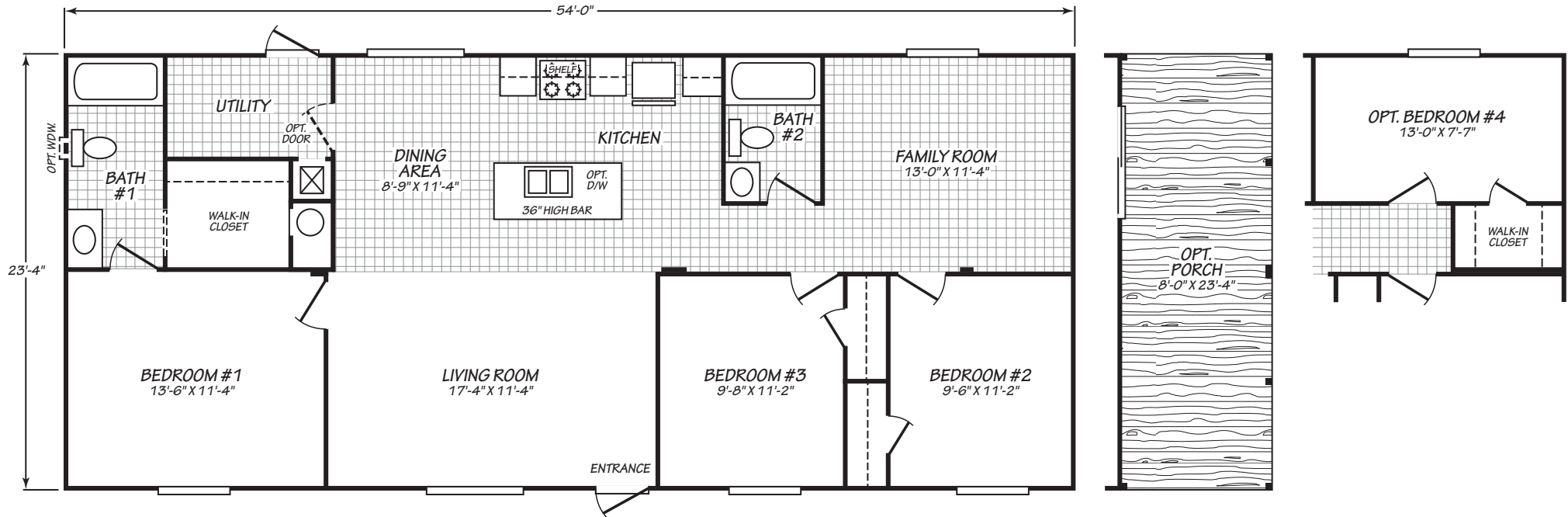
3 Bedroom • 2 Bath • 1,120 Square Feet

©2024 FLEETWOOD HOMES INC. ALL RIGHTS RESERVED

Important: Because we continually update and modify our products, it is important for you to know that our brochures and literature are for illustrative purposes only. **ILLUSTRATIONS MAY SHOW OPTIONAL FEATURES.** All information contained herein may vary from the actual home we build. Dimensions are nominal length and width measurements are from exterior wall to exterior wall. We reserve the right to make changes at any time, without notice or obligation, in prices, colors, materials, specifications, features and models. Please check with your retailer for specific information about the home you select.

PU/230/JUL23
PFS APPROVAL_7/21/23





MODEL 24543P

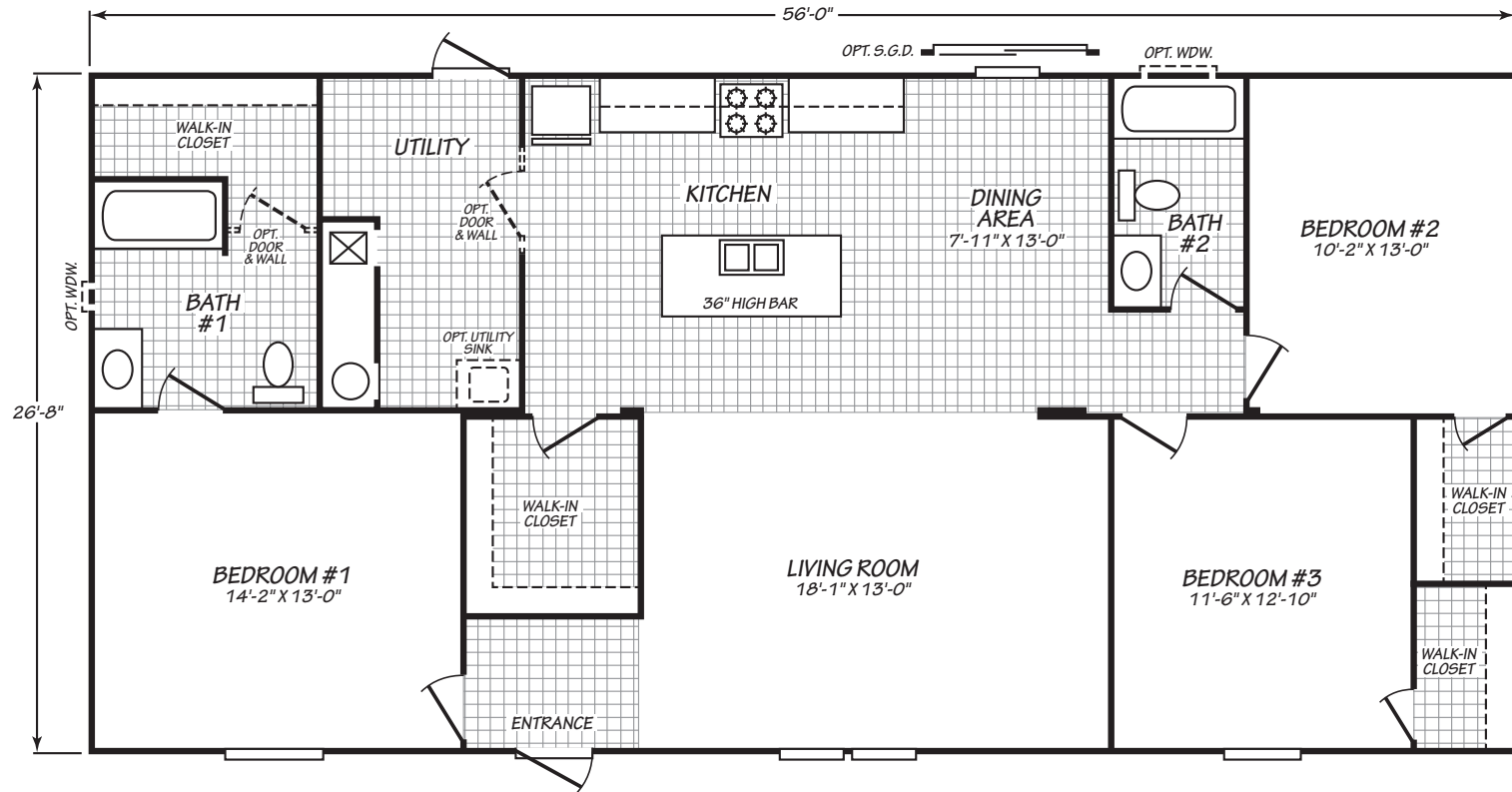
3 Bedroom • 2 Bath • 1,260 Square Feet

©2024 FLEETWOOD HOMES INC. ALL RIGHTS RESERVED

Important: Because we continually update and modify our products, it is important for you to know that our brochures and literature are for illustrative purposes only. **ILLUSTRATIONS MAY SHOW OPTIONAL FEATURES.** All information contained herein may vary from the actual home we build. Dimensions are nominal length and width measurements are from exterior wall to exterior wall. We reserve the right to make changes at any time, without notice or obligation, in prices, colors, materials, specifications, features and models. Please check with your retailer for specific information about the home you select.

PU/230/MAY23
PFS APPROVAL_5/24/23





MODEL 28563P

3 Bedroom • 2 Bath • 1,493 Square Feet

©2024 FLEETWOOD HOMES INC. ALL RIGHTS RESERVED

Important: Because we continually update and modify our products, it is important for you to know that our brochures and literature are for illustrative purposes only. **ILLUSTRATIONS MAY SHOW OPTIONAL FEATURES.** All information contained herein may vary from the actual home we build. Dimensions are nominal length and width measurements are from exterior wall to exterior wall. We reserve the right to make changes at any time, without notice or obligation, in prices, colors, materials, specifications, features and models. Please check with your retailer for specific information about the home you select.

PU/230/APR23
PFS APPROVAL_4/18/23



Pure Home Option Form

Description	Price	Qty
PACKAGES		
Faucets - Single Lever T/O	\$230.00	
Package - Appliance - Essential Stainless	\$3,040.00	
Package - Appliance - Essential Gas and Stainless	\$3,110.00	
Package - Appliance - Essential Pro Stainless	\$3,300.00	
Package - Appliance - Essential Pro Gas and Stainless	\$3,370.00	
Package - Appliance - Elite Stainless	\$4,000.00	
Package - Appliance - Elite Gas and Stainless	\$4,070.00	
Package - Appliance - Elite Pro Stainless	\$4,270.00	
Package - Appliance - Elite Pro Gas & Stainless	\$4,340.00	
Package - Bath Upgrade	\$2,235.00	
Package - Deluxe Interior	\$5701 - \$6820	
Package - Deluxe Kitchen - Stainless Steel - Electric	\$4,937.00	
Package - Deluxe Kitchen - Stainless Steel - Gas	\$5,171.00	
Package - Energy Star	\$3095- \$3445	
Package - Prairie Dusk	\$1,250.00	
STRUCTURAL		
Flip End to End	\$1,430.00	
Floor Plan - Mirror Image	\$1,430.00	
Perimeter Heating - (per register)	\$195.00	
Stretch - 16" (A & B)	\$1,420.00	
Supersize	\$130.00	
THERMAL		
Insulation - Ceiling R38 ILO R21 (per LF) and Floor	\$8.00	
Insulation - Ceiling R40 ILO R21 (per LF) and Floor	\$9.00	
Insulation - Floor R22 ILO R11 (per LF) and Floor	\$7.00	
Insulation - Floor R33 ILO R11 (per LF) and Floor	\$10.00	
PLUMBING		
Water Shut Off Valves T/O	\$175.00	
ELECTRICAL		
AC Disconnect	\$195.00	
Ceiling Fan - Wire Only	\$130.00	
Ceiling Fan w/Light - Installed	\$260.00	
Electric Service - 100 Amp	\$0.00	
Electric Service - 200 Amp	\$0.00	
Heat Pump Ready	\$120.00	
Light - Can - Each	\$130.00	
Light - Chandelier - Spherical	\$180.00	
Light - Exterior Flood (each)	\$70.00	
Light - Pendant w/Edison Bulb	\$130.00	
Light - Pendant - Vintage	\$300.00	
Meter Base	\$595.00	
Recept - Exterior - GFI - Add	\$100.00	
Recept - Interior - Add	\$45.00	
Switch - Interior 3 Way	\$75.00	
Thermostat - Digital - AC Compatible	\$130.00	
Thermostat - Digital - Heat Pump Compatible	\$110.00	
TV & Phone Raceway	\$45.00	
USB Charging Recept	\$70.00	
FLOORS		
Carpet - Basic Mix	\$245-\$645	
Carpet - Shake It Up	\$550 - \$1165	
Carpet - Omit	-\$225.00	
Carpet Pad - Omit	-\$150.00	
Floor Covering - Vinyl Entry	\$80.00	
Floor Covering - Vinyl ILO Carpet (per room)	\$170.00	
Ship Loose - Lino Bar (3 Pcs)	\$240.00	
CABINETRY		
Adjustable Shelves - Kitchen Overhead	\$130.00	
Base Cab - Additional Drawer Bank	\$240.00	
Base Cab - Drawer over Door - Per Drawer	\$55.00	
Base Cab Pull Out Trash Can	\$200.00	
Base Cab w/Utility Sink	\$695.00	
Bookcase - Built In (each)	\$200.00	
Cab Doors - Drawers - Soft Close T/O	\$1,050.00	
Cab Doors - Stiles Hardwood Raised Panel - Mesquite	\$2,240.00	
Cab Doors - Stiles Hardwood Shaker - Coffee Cherry	\$2,240.00	
Cab Doors - Stiles Hardwood Shaker - White	\$2,240.00	
Cabs - Lined Base	\$510.00	
Cabs - Lined Overheads	\$290.00	
Countertop - Formica Upgrade - Bullnose Edge T/O	\$920.00	
Countertop - Formica Upgrade - Self Edge T/O	\$300.00	
Countertop - Standard Formica - Bullnose Edge T/O	\$610.00	
Drawer Guides - Full Access	\$430.00	
Entertainment Center - Barnwood	\$2,240.00	
Hardware - Cab Pulls Dr & Drw Upgrade Brushed Nickel	\$170.00	
Hardware - Cabinet Knobs on Doors & Drawers	\$75.00	
Roof Load - 80 lb w/3:12 Roof Pitch - 14' Wide (per LF)	\$30.00	

Description	Price	Qty
Locker w/Bench	\$695.00	
Molding - Crown - Kitchen Cabinets	\$140.00	
Overhead Cab - Over Refrigerator	\$260.00	
Overhead Cab - Utility	\$240.00	
Overhead Cab - 42" W/2 Adjustable Shelves	\$390.00	
Pantry/Linen - 3 Door	\$495.00	
Shelf - Over Refrigerator	\$95.00	
Shelf - Utility 1	\$50.00	
Tile Backsplash - Mosaic 4" - T/O	\$650.00	
Tile Backsplash - T/O - 4"	\$410.00	
KITCHEN		
Dishwasher - Plumb & Wire Only w/ Opening	\$80.00	
Dishwasher - Stainless Steel	\$695.00	
Garbage Disposal	\$200.00	
Garbage Disposal - Wire & Switch Only	\$70.00	
Icemaker - Plumbed Only	\$60.00	
Icemaker - w/ Plumbing	\$230.00	
Microwave - Over Range - Stainless Steel	\$640.00	
Range - Electric - Smooth Top - Stainless Steel	\$750.00	
Range - Gas - Self Cleaning - Stainless Steel	\$760.00	
Range - Gas - Stainless Steel	\$260.00	
Range - Plumb for Gas & Wire for Electric	\$140.00	
Range Hood - Canopy Decorative	\$250.00	
Range Hood - Stainless & Glass	\$640.00	
Range Hood - Stainless & Glass w/Full Tile Backsplash T/O Kt	\$920.00	
Range Hood - SS & Glass w/Full Mosaic Tile Backsplash T/O Kt	\$1,670.00	
Range - Omit	-\$225.00	
Refrigerator - 28 CF SxS - Stnls Steel	\$1,320.00	
Refrigerator - 25 CF - French Door - Stainless Steel	\$2,540.00	
Refrigerator - Omit	-\$310.00	
Faucet - Pull-Out Faucet w/Sprayer	\$160.00	
Faucet - Single Lever - Gooseneck w/Pull Down Sprayer	\$260.00	
Laminate Backsplash - Behind Range	\$100.00	
Sink - Kitchen - Farmhouse w/Apron - Black Stainless	\$550.00	
Sink - Kitchen - Farmhouse - Stainless Steel	\$430.00	
Sink - 8" Deep Stainless Steel	\$70.00	
Tile Backsplash - Behind Range	\$210.00	
Tile Backsplash - Full Wall - Kitchen	\$630.00	
Tile Backsplash - Full Wall - Mosaic - Kitchen	\$1,295.00	
UTILITY ROOM		
Furnace - Electric	\$0.00	
Drain Line - Water Heater Installed	\$90.00	
Dryer - Gas - Plumb Only	\$130.00	
Floor Register - Toe Kick (Ea)	\$155.00	
Furnace Door - Metal	\$325.00	
Furnace Door - Wood	\$360.00	
Furnace - Electric	STD	
Furnace - Gas	\$640.00	
Furnace - High Efficiency Gas	\$1,720.00	
Recept - Freezer Recept	\$90.00	
Washer & Dryer - Front Load Electric	\$2,060.00	
Stackable washer/dryer prep	\$195.00	
Wtr Htr - 40 Gallon Electric	\$130.00	
Wtr Htr - 50 Gallon Electric	\$240.00	
Wtr Htr - 40 Gallon Gas	\$1,100.00	
Wtr Htr - 50 Gallon Gas	\$1,245.00	
INTERIOR		
Ceiling - Beams - Barnwood (ea)	\$330.00	
Fireplace - Electric 60" Linear	\$2,650.00	
Fireplace - Gas - Gray Stacked Stone	\$4,570.00	
Interior - Accent - Barnwood (per SF)	\$16.00	
Mirror w/Barnwood Trim	\$200.00	
Molding - Baseboard - 2 1/4" (per LF) - (per floor)	\$7.00	
Molding - Baseboard - 5 1/4" (per LF) - (per floor)	\$17.00	
Molding - Ceiling Crown Upgrade - (per SF)	\$2.50	
Shelf - Floating - up to 48"	\$170.00	
Shelves - Wood w/Pole - White	\$240.00	
T&T - T/O (Per Sq. FT)	\$2.75	
Ship Loose - 3" Interior Trim Board - Center	STD	
Valance - Wood (per Window)	\$80.00	
Window Sills - Upgrade	\$220.00	
EXTERIOR		
Axle - Brake Entire Floor - PER FLOOR	\$300.00	
Chassis - Modified - per LF	\$12 - \$20	
Foundation Ready	\$530 or \$920	
Roof Load - 40 lb w/3:12 Roof Pitch - 14' Wide (per LF)	\$4.00	
Roof Load - 60 lb w/3:12 Roof Pitch - 14' Wide (per LF)	\$25.00	
Tub/Shower One Piece 60" - Master Bath	\$460.00	

Pure Home Option Form

Description	Price	Qty
Roof Load - 100 lb w/3:12 Roof Pitch - 14' Wide (per LF)	\$60.00	
Roof Load - 120 lb w/3:12 Roof Pitch - 14' Wide (per LF)	\$60.00	
Roof Load - 40 lb w/3:12 Roof Pitch - 16' Wide (per LF)	\$5.00	
Roof Load - 60 lb w/3:12 Roof Pitch - 16' Wide (per LF)	\$26.00	
Roof Load - 80 lb w/3:12 Roof Pitch - 16' Wide (per LF)	\$45.00	
Roof Load - 100 lb w/3:12 Roof Pitch - 16' Wide (per LF)	\$65.00	
Roof Load - 120 lb w/3:12 Roof Pitch - 16' Wide (per LF)	\$65.00	
Roof Load - 40 lb w/3:12 Roof Pitch - 24' Wide (per LF)	\$8.00	
Roof Load - 60 lb w/3:12 Roof Pitch - 24' Wide (per LF)	\$30.00	
Roof Load - 80 lb w/3:12 Roof Pitch - 24' Wide (per LF)	\$70.00	
Roof Load - 100 lb w/3:12 Roof Pitch - 24' Wide (per LF)	\$95.00	
Roof Load - 120 lb w/3:12 Roof Pitch - 24' Wide (per LF)	\$100.00	
Roof Load - 40 lb w/3:12 Roof Pitch - 28' Wide (per LF)	\$10.00	
Roof Load - 60 lb w/3:12 Roof Pitch - 28' Wide (per LF)	\$60.00	
Roof Load - 80 lb w/3:12 Roof Pitch - 28' Wide (per LF)	\$90.00	
Roof Load - 100 lb w/3:12 Roof Pitch - 28' Wide (per LF)	\$120.00	
Roof Load - 120 lb w/3:12 Roof Pitch - 28' Wide (per LF)	\$130.00	
Barrier - Air Infiltration	\$380.00	
Doorbell	\$100.00	
Exterior - Plastic Wrap Front & Rear	\$260.00	
Exterior Trim - 5/4 -Window/Door (Ea)	\$50.00	
Exterior Bottom Trim	\$335.00	
Ship Loose - Exterior Bottom Trim	\$295.00	
Hose Bibb	\$90.00	
Roof - Ice & Snow Shield	\$600.00	
Roof - Metal (per Linear Ft)	\$70.00	
Roof - Metal Addt'l W/Dormer - 10'	\$1,060.00	
Shutter - Exterior - Craftsman (per window)	\$100.00	
Shutter - Exterior - "Z" Style (per window)	\$110.00	
Siding - Lap (per Perimeter Ft)	\$35.00	
Siding - Premium Lap - Cascade Slate (per Perimeter Ft)	\$60.00	
Siding - Premium Lap - Summer Wheat (per Perimeter Ft)	\$60.00	
DOORS & WINDOWS		
Door - Exterior - 6 Panel Inswing - 36" Front	\$525.00	
Door - Exterior - 6 Panel Inswing - 36" Rear	\$525.00	
Door - Exterior - Add	\$795.00	
Door - Exterior - Inswing Rear w/9 Light & Deadbolt - 36"	\$575.00	
Door - Exterior - Inswing w/1/2 Decor Glass Frnt	\$860.00	
Door - Exterior - Patio 72" w/ Screen	\$1,980.00	
Door - Exterior - Patio 72" ILO 1 Window	\$1,360.00	
Door - Exterior - Relocate	\$150.00	
Door - Exterior - Storm	\$380.00	
Door - Interior - Add	\$300.00	
Door - Interior - Barn Sliding	\$920.00	
Door - Sliding Glass	\$1,140.00	
Door - Sliding Glass - Vinyl ILO 1 Window	\$890.00	
Door Handles - Interior - Lever	\$13.00	
Fire Door - Additonal	\$945.00	
Fire Door - Replaces Standard	\$695.00	
Window - 14 x 42 Bath Vinyl	\$250.00	
Window - 30 x 15	\$170.00	
Window - 30 x 40 - Add	\$240.00	
Window - 30 x 59 Vinyl - Add	\$350.00	
Window - 36 x 8 Vinyl	\$170.00	
Window - 72" Transom	\$370.00	
Window - Relocate	\$170.00	
Window - Vinyl - Additional	\$470.00	
BATHROOMS		
Faucet - Single Lever - Per Bath	\$65.00	
Lavy - China Bath Lavy	\$70.00	
Lavy - Double Bowl in Master Bath	\$280.00	
Lavy - Rectangular - China	\$130.00	
Medicine Cabinet - Mirrored - Per Bath	\$130.00	
Overhead Cab - Per Bath	\$320.00	
Shower - 60" Groutless Resin Tile - Master Bath	\$2,995.00	
Shower Stall - Fiberglass 60" - Master Bath	\$690.00	
Shower Stall - Fiberglass 60" - Guest Bath	\$690.00	
Tile Backsplash - Per Bath	\$80 - \$100	
Tile Backsplash - Mosaic 4" - Per Bath	\$150.00	
Toilet - Raised Height (each)	\$220.00	
Towel Bar & Tissue Holder - Per Bath	\$35.00	
Tub/Shower One Piece Oval 60" - Master Bath	\$620.00	
Tub/Shower One Piece Oval 60" - Guest Bath	\$620.00	

Description	Price	Qty
Tub/Shower One Piece 60" - Guest Bath	\$460.00	
MISCELLANEOUS		
Detector - Carbon Monoxide & Smoke	\$90.00	
Detector - Carbon Monoxide & Smoke (HUD Compliant)	\$250.00	
MODEL SPECIFIC OPTIONS		
14482P		
Shrink - 4' - Alternate	-\$895.00	
Stretch - 4' w/ Two Baths	\$4,895.00	
Porch - 8' Covered Porch	\$5,695.00	
14663P		
Stretch - 4' - Alternate	\$2,495.00	
16723P		
Shrink - 4' - Alternate	-\$895.00	
Stretch - 4' - Alternate	\$2,495.00	
Wall & Door - Master Closet	\$395.00	
24543P		
Package - Curb Appeal	\$3,832.00	
4th Bedroom	\$995.00	
Wall & Door - Master Closet	\$395.00	
Wall & Door - Utility	\$395.00	
Eaves - 6" - (per perimeter ft)	\$6.00	
Eaves - 16" - (per perimeter ft)	\$7.00	
Dormer - 10'	\$1,010.00	
28563P		
Package - Curb Appeal	\$3,832.00	
Ducts - In Floor Crossover	\$470.00	
Wall & Door - Master Closet	\$395.00	
Wall & Door - Utility	\$395.00	
Eaves - 6" - (per perimeter ft)	\$6.00	
Eaves - 16" - (per perimeter ft)	\$7.00	
Dormer - 10'	\$1,010.00	